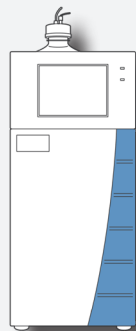
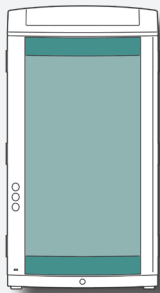
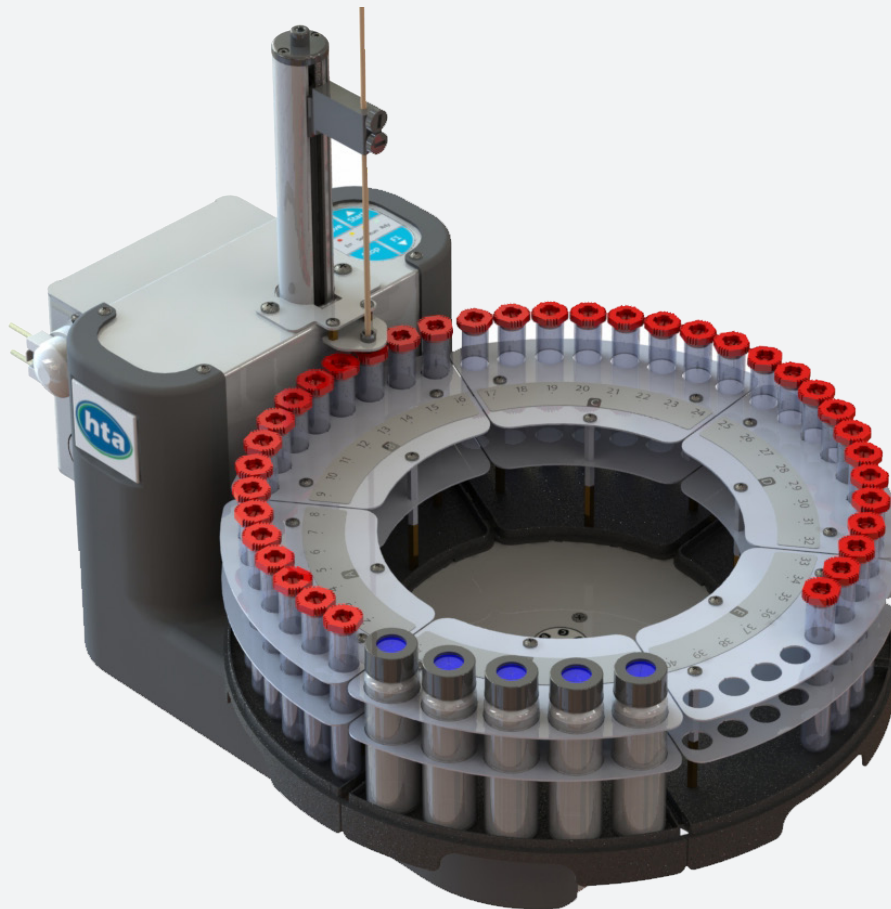




# HT1500U FOR IC

## AUTOSAMPLER FOR ION CHROMATOGRAPHY



### KEY FEATURES:

- For both anions and cation analysis
- Easy-To-Operate
- Removable racks for continuous feeding
- Use low cost consumables

### COMBINES WITH YOUR IC

**HT1500U** can effectively automate both **anions and cations** analysis with a single device. **HT1500U** can be combined with Metrohm and Thermo-Dionex's IC systems<sup>1</sup>, offering the best balance between quality and affordability to perfectly fit the requirements of standard **IC applications**.

### OPERATIONS: HOW IT WORKS

**Load your samples and start the sample processing.** The tray rotates and the arm with the probe is aligned on top of the first sample tube to be processed.

The probe is inserted at the **programmable depth** where the sample is aspirated through the built-in pump and **delivered to the Ion Chromatograph**. Then, by using the on-board solvents, the probe and the whole flow-

path are cleaned before processing the next sample.

**HT1500U**, which uses affordable consumables, **supports multiple racks – each of them removable** - allowing for continuous feeding and convenient operations.

**HT1500U** offers the capability to automate up to 40 samples, and also includes 5 positions for rinsing solvents. Both **open and sealed tubes** are supported to fit your workflow.

## EASY-TO-OPERATE

**HT1500U** comes with HTA Autosampler Manager (Standard Version), our complimentary software control for autosampler method programming.

The method programming by HTA Autosampler Manager is typically done at the autosampler installation or when a change in the method/sequence is required.

During the daily routine, instead, you can **start the sample list directly from the Chromatography Data System that controls the IC system**: IC Net, MagIC Net, Chromeleon<sup>1</sup>.

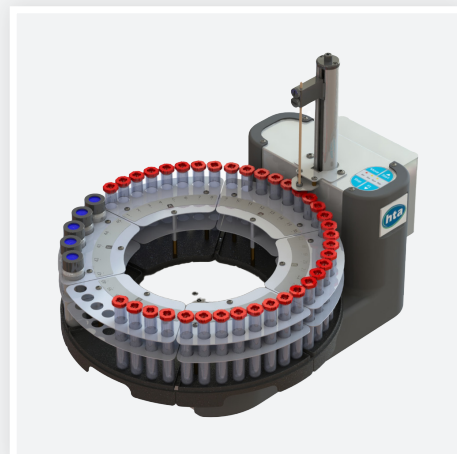
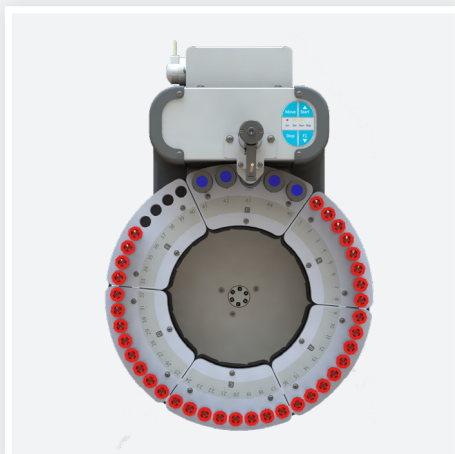
As soon as the sample list is started on the CDS, the IC triggers **HT1500U** so that the autosampler can begin the preparation of the first sample. After the injection is completed, the IC starts the analysis as well as the data acquisition. When the analysis of one sample has been completed, the cycle automatically restarts for the

next sample until all the sample list have been processed for a seamless integration.

## NO COMPROMISE ON QUALITY

While we have struggled to achieve a **low price**, we haven't made any compromises on quality.

**HT1500U** has a **strong commitment to quality** that focuses on providing a real unattended experience: **HT1500U** will be your workhorse requiring very little or no attention from lab technicians. The **materials** have been picked up to provide longevity; the **up-to-date technologies** offer reliability that deserves a modern instrument while the design attests to our **care in details**.



## TECHNICAL SPECIFICATIONS

### General features

Rack:	5, removable
Sample capacity:	40 tubes, 10ml
Maintenance:	preventive counters available
Electrical control:	USB and TTL

### Wash

Mode:	every injection/sample/step pre & post injection
Washing reagents:	5 vials, 40ml

### Filling

Sampling depth:	programmable
Sample cycles:	up to 9
Sampling time:	programmable
Filling speed:	programmable
Viscosity delay:	0-25s

### Injection

Mode:	Full loop
-------	-----------

### Physical features

Dimensions (WxHxD) <sup>2</sup> :	355x380x520mm
Weight:	7.5kg
Power supply:	100-240±10%Vac; 50-60Hz; 60W

Free software "HTA Autosampler Manager (Standard Version)" is provided for PC control; upgrade to "HTA Autosampler Manager (CFR 21 Part 11 Version)" should be purchased separately. PC is required for setup, service, method and sequence editing.

<sup>1</sup> Metrohm, Thermo and Dionex are registered trade-marks, such as their own products. This flyer is not related to any of these companies.

<sup>2</sup>Without accounting the transfer line

**HTA s.r.l.**

via del Mella, 77-79 - 25131 Brescia - ITALY  
T: +39 030 3582920  
[www.hta-it.com](http://www.hta-it.com) | [enquiry@hta-it.com](mailto:enquiry@hta-it.com)



Distributed by: