

**Thermo Scientific
Sorvall® T1
Centrifuge Series**



**Versatility, convenience and value
for routine applications**

*Featuring fast rotor
exchanges with AUTO-LOCK®*



Versatility, convenience and value for routine applications

The Thermo Scientific Sorvall T1 Centrifuge Series provides unsurpassed versatility and exceptional performance in a quiet, compact, 1.2-liter benchtop centrifuge. Offering outstanding reliability and a wide selection of rotors, the Sorvall T1 Series delivers consistent separations quickly, with maximum convenience and comfort.

Exceptional capacity

The Sorvall T1 Series provides high capacity in a compact footprint, so you can process large numbers of samples without giving up precious bench space.

- Process 60 x 5/7 ml Vacutainer® or 16 x 50 ml conical tubes with the versatile T41 swing-out rotor.
- Process 28 x 5/7 ml Vacutainer or 4 x 50 ml conical tubes in sealed conditions with the S41 rotor.

- Spin 6 x 50 ml conical tubes at up to 12,500 x g with the AC50.10 fixed-angle rotor, or spin 8 x 50 ml tubes with the F15J - 8x50c FIBERLite® conical tube rotor.

- Spin 2 x 3 microplates in sealed buckets with the T20 microplate rotor.
- Process 48 x 2 ml microtubes at > 23,000 x g with the FIBERLite® microtube rotor.





1. Snap in your swing-out rotor and lock it in place.



2. Instantly unfasten and remove it.



3. Snap in your microplate rotor, and you're ready to spin again – in less than 5 seconds!

Changing rotors is easy – with AUTO-LOCK

Our patented AUTO-LOCK rotor exchange system makes routine processing safer, faster and easier:

- **Worry-free spins** – AUTO-LOCK ensures that your rotor is properly locked in place with minimum effort.

- **Fast protocol changes** – You can swap rotors in seconds, without having to remove or tighten lug nuts.
- **Easy cleaning** – AUTO-LOCK makes routine cleaning straightforward.



Adapters and accessories are available for all commonly used sample containers. Sealing lids provide certified protection against aerosols, bacteria and viruses.

Convenient operation

- The patented AUTO-LOCK rotor exchange system on the Sorvall T1 Series lets you swap rotors in seconds. You can change protocols quickly and perform daily cleaning tasks with ease.
- The user-friendly control panel gives you one-touch access to frequently used programs.



Advanced technology

The high-throughput 48 x 2 ml and 8 x 50 ml carbon fiber rotors from FIBERLite are easy to handle and offer a safer alternative to conventional metallic rotors, which can corrode with age. Capable of supporting high capacities and g-forces, these rotors also provide a high level of chemical resistance against corrosive agents, making them a truly cost-effective investment for your lab.

Proven reliability

- The brushless induction motor provides years of service with minimal maintenance.
- Whisper-quiet operation eliminates distractions.

Proven safety

- The Sorvall T1 Series supports a protected laboratory environment with a full set of sealed accessories, tested by CAMR* in Porton Down, UK, the gold standard in biological safety testing.

*CAMR is now incorporated within the UK Health Protection Agency (HPA).

Thermo Scientific Sorvall T1 Centrifuge Series Rotors and Accessories

T41 High-Capacity Swing-Out Rotor



T41 high-capacity swing-out rotor (05376124) shown with a 280 ml standard bucket (05376125) and sealing lid (05376126) along with a variety of inserts to meet your specific application requirements

Description	Rotor Capacity	Max Tube ø (mm)	Radius (mm)	Max Speed (rpm)	Max RCF (x g)	Catalog Number
T41 Swing-Out Rotor, 4 x 280 ml						05376124
Standard buckets, 280 ml (set of four)		77	164	4100	3082	05376125
Buckets, 4 x 50 ml conical (set of four)	16	33	169	4100	3176	05376127
Buckets, 3 x 50 ml conical skirted (set of four)	12	33	169	4100	3176	05376128
Buckets, 15 x 5/7 ml Vacutainer (set of four)	60	13.5	165	4100	3101	05376129
Sealing lids for 05376125 and 05376129 (set of four)						05376126
Adapters for T41 Swing-Out Rotor (set of four)						
1 x 280 ml round	4	64	161	4100	3026	05376130
1 x 250 ml flat	4	61	161	4100	3026	05376131
1 x 200 ml flat	4	55	156	4100	2932	05376132
1 x 175 ml conical	4	60	166	4100	3120	05376133
1 x 100 ml	4	38	161	4100	3026	05376136
2 x 65 ml round	8	34	156	4100	2932	05376137
4 x 50 ml round	16	28.5	132	4100	2481	05376138
1 x 50 ml conical skirted	4	29	163	4100	3063	05376139
2 x 50 ml conical	8	29	134	4100	2518	05376140
3 x 50 ml conical*	12	29	134	4100	2518	05376141
1 x Centriprep	4	28	160	4100	3007	05376159
5 x 30 ml round	20	25.5	157	4100	2951	05376142
3 x 25 ml universal	12	26	153	4100	2875	11204125
5 x 25 ml	20	24	155	4100	2913	05376143
4 x 25 ml Corex	16	24	155	4100	2913	05376144
9 x 16 ml round	36	18	160	4100	3007	05376145
12 x 10 ml Vacutainer	48	17	160	4100	3007	05376146
4 x 15 ml Vacutainer *	16	16	163	4100	3063	05376157
7 x 15 ml urine	28	17	161	4100	3026	05376148
4 x 15 ml conical	16	17	163	4100	3063	05376149
5 x 15 ml conical *	20	17	163	4100	3063	05376150
4 x 14 ml Corning round	16	15.5	163	4100	3063	05376160
12 x 13 ml	48	16	160	4100	3007	05376151
9 x 10 ml	36	16	160	4100	3007	05376147
19 x 8 ml	76	12	161	4100	3026	05376152
12 x 5/7 ml Vacutainer	48	12.5	160	4100	3007	05376158
19 x 5 ml RIA	76	13	161	4100	3026	05376153
19 x 3 ml RIA	76	11	161	4100	3026	05376154
13 x 2 ml	52	10	159	4100	2988	05376155

* In open buckets only.

S41 Swing-Out Rotor



S41 swing-out rotor (05376104) shown with a 200 ml standard bucket (05376105) and sealing lid (05376106) along with adapters for a variety of applications

Description	Rotor Capacity	Max Tube ø (mm)	Radius (mm)	Max Speed (rpm)	Max RCF (x g)	Catalog Number
S41 Swing-Out Rotor, 4 x 200 ml						05376104
Standard buckets, 200 ml (set of four)		57	161	4100	3026	05376105
Sealing lids for 05376105 (set of four)						05376106
Adapters for S41 Swing-Out Rotor (set of four)						
200 ml PP bottle p/n 41193271	4	56.5	161	4100	3026	direct
1 x 100 ml	4	45	159	4100	2990	05376107
1 x 50 ml round	4	35	158	4100	2970	05376108
1 x 50 ml conical	4	29	159	4100	2990	05376109
1 x 25 ml universal flat/skirt	4	25	158	4100	2970	05376111
3 x 20 ml	12	22	159	4100	2990	05376112
3 x 15 ml conical	12	17.5	156	4100	2930	05376113
7 x 15 ml Nalgene®	28	17	156	4100	2930	05376114
3 x 15 ml urine	12	17	159	4100	2990	11210419
3 x 15 ml Vacutainer	12	17.5	159	4100	2990	11210523
3 x 12 ml Greiner flat	12	17.5	159	4100	2990	05376115
5 x 10 ml Vacutainer	20	16	159	4100	2990	05376116
5 x 5/10 ml flat	20	17	159	4100	2990	05376117
7 x 5/7 ml Vacutainer	28	13	159	4100	2990	11210604
9 x 5 ml Vacutainer	36	13.5	159	4100	2990	05376120
5 x 5 ml flat	20	17	159	4100	2990	05376118
12 x 3–5 ml	48	12	158	4100	2970	05376122
6 x 2 ml	24	11	158	4100	2970	05376123

T20 Microplate Rotor

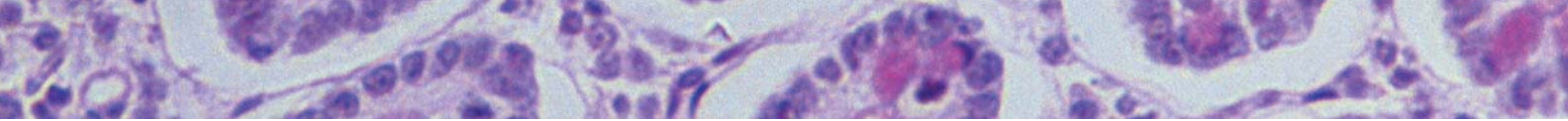


Sealed plate carrier (05376164)

Description	Rotor Capacity	Radius (mm)	Max Speed (rpm)	Max RCF (x g)	Catalog Number
T20 Microplate Rotor	2 x 3 microplates / 2x1 deepwell	115	4100	2160	05376163
Sealed plate carriers (set of two)	2 x 3 microplates / 2x1 deepwell				05376164
Rubber cushion for flexible microplates					05376294
Flask adapters (set of two)	2 x 1 T-25 or T-75 Falcon® type flasks				05376167



Indicates that the centrifuge accessory has been successfully tested for biological containment by C.A.M.R. (HPA), Porton Down, UK.



AC15.4 Fixed Angle Rotor



Description	Rotor Capacity	Max Tube ø (mm)	Radius (mm)	Max Speed (rpm)	Max RCF (x g)	Catalog Number
AC15.4 Fixed Angle Rotor, 37°	30 x 15 ml	17.5	135	4100	2537	05376169
Adapters (each)						
1 x 10/15 ml	30		135	4100	2537	direct
1 x 13.5 ml	30		130	4100	2440	05376175
1 x 8/7 ml Vacutainer	30		130	4100	2440	05376249
1 x 5 ml Hemogard™	30		116	4100	2180	05376173
1 x 5 ml	30		116	4100	2180	05376245
1 x 3 ml	30		112	4100	2100	05376246
1 x 2/1.5 ml	30		105	4100	1970	05376172

AC100.10A Fixed Angle Rotor



Description	Rotor Capacity	Max Tube ø (mm)	Radius (mm)	Max Speed (rpm)	Max RCF (x g)	Catalog Number
AC100.10A Fixed Angle Rotor, 25°	6 x 100 ml	38	99	10000	11066	05376176
Adapters (set of six)						
1 x 50 ml round	6	29	93	10000	10397	05376177
1 x 50 ml conical	6	30	93	10000	10397	05376178
1 x 38 ml round	6	25.5	88	10000	9838	05376180
1 x 15 ml conical	6	17	93	10000	10397	05376181
2 x 10 ml round	12	16	83	10000	9279	05376179

AC50.10 Fixed Angle Rotor



Description	Rotor Capacity	Max Tube ø (mm)	Radius (mm)	Max Speed (rpm)	Max RCF (x g)	Catalog Number
AC50.10 Fixed Angle Rotor, 40°	6 x 50 ml con	29.5	112	10000	12520	05376182
Adapters						
1 x 50 ml conical (each)	6	30	112	10000	12520	direct
1 x 50 ml round (set of six)	6	28.5	112	10000	12520	05376186
1 x 30/38 ml (set of eight)	6	26	91	10000	10174	05376183
1 x 15 ml conical (set of four)	6	17.5	105	10000	11738	05376184
1 x 10 ml (set of four)	6	17	112	10000	12520	05376185

FIBERLite F15J-8x50c Carbon Fiber Conical Tube Rotor



Description	Rotor Capacity	Max Tube ø (mm)	Radius (mm)	Max Speed (rpm)	Max RCF (x g)	Catalog Number
F15J-8x50c Carbon Fiber Conical Tube Rotor	8 x 50 ml	29	104	10000	11626	11210850
Set of two adapters for 15 ml disposable conical tube	8 x 15 ml	19				75100378

AC2.14 Sealed Microtube Rotor



Description	Rotor Capacity	Max Tube ø (mm)	Radius (mm)	Max Speed (rpm)	Max RCF (x g)	Catalog Number
AC2.14 Sealed Rotor, 45°	24 x 2 ml	11	84	14600	20016	05376187
Spare lid for AC2.14 Rotor						05376188
Adapters: see adapters for FIBERLite High-Throughput Microtube Rotor						

FIBERLite® High-Throughput Microtube Rotor

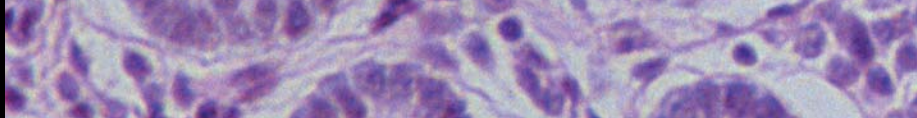


Description	Rotor Capacity	Max Tube ø (mm)	Radius (mm)	Max Speed (rpm)	Max RCF (x g)	Catalog Number
FIBERLite Microtube Rotor, 45°	48 x 2 ml	11	97	14600	23113	05376189
Adapters (set of 24)						
1 x 2/1.5 ml	24 / 48	10				direct
1 x 0.5 / 0.8 ml	24 / 48	8				05376252
1 x 0.5 ml	24 / 48	6				05376191
1 x 0.2 ml PCR	24 / 48	6				05376254

DC6.11 Drum Rotor



Description	Rotor Capacity	Max Tube ø (mm)	Radius (mm)	Max Speed (rpm)	Max RCF (x g)	Catalog Number
DC6.11 Drum Rotor, 90°		N/A	72	14600	17158	05376193
Adapters (one rack)						
10 x 1.5–2 ml	60	11				05376194
20 x 0.5–0.8 ml Microtainer™	120	8				05376197
20 x 0.7 ml Rhesus	120	6				05376198
21 x 0.6 ml Viatron	126	6				05376196
32 x 0.25–0.4 ml Beckman	192	6				05376195



Thermo Scientific Sorvall T1 Centrifuge Series Specifications



Specifications	Sorvall T1	Sorvall RT1
Max Capacity		
Swing-Out	4 x 280 ml	4 x 280 ml
Fixed Angle	6 x 100 ml	6 x 100 ml
Max Density	1.2	1.2
Max Load	1.34 kg	1.34 kg
Max Speed		
Swing-Out	4,100 rpm	4,100 rpm
Fixed Angle	14,600 rpm	14,600 rpm
Max RCF		
Swing-out	3,176 x g	3,176 x g
Fixed Angle	23,113 x g	23,113 x g
Control System	Microprocessor	Microprocessor
Programs	4	4 + pre-cooling with direct recall
Speed Set/Display		
Range	500–14,600 rpm	500–14,600 rpm
Step	10 rpm	10 rpm
Display Accuracy	+/- 10 rpm	+/- 10 rpm
RCF Set/Display		
Range	18–23,113	18–23,113
Step	1 x g across the whole range	1 x g across the whole range
Display Accuracy	+/- 1 x g	+/- 1 x g
Radius Control Accuracy	1 mm	1 mm
Timer Set/Display	30 sec–99 min + continuous	30 sec–99 min + continuous
Temperature Set/Display	N/A	-9°C to 40°C
Acceleration Rates	5	5
Braking Rates	5 + no brake	5 + no brake
Drive System	Direct	Direct
Motor Type	Brushless induction	Brushless induction
Power (average / max)	350 / 500W	550 / 800 W
Sound level (6 x 50 ml at 10000 rpm)	61 dBA	54 dBA
Sound level (4 x 280 ml at 4100 rpm)	62 dBA	59 dBA
Standards	IEC 1010-1, IEC 1010-2-020, CE marked, UL listed, cUL certified	IEC 1010-1, IEC 1010-2-020, CE marked, UL listed, cUL certified

Ordering Information	Sorvall T1	Sorvall RT1
Catalog Numbers		
230V–50/60 Hz	75002381	75002383
120 V–60 Hz	75002382	75002384
Product Dimensions		
Height (lid closed) [cm / in]	37 / 14.6	37 / 14.6
Width [cm / in]	40 / 15.7	57 / 22.4
Depth [cm / in]	50 / 19.7	60 / 23.6
Weight [kg / lb]	40 / 88.1	72 / 158.7
Packing Dimensions		
Height [cm / in]	60 / 23.6	61 / 24.0
Width [cm / in]	61 / 24.0	76 / 29.9
Depth [cm / in]	54 / 21.2	74 / 29.1
Weight [kg / lb]	52 / 114.6	85 / 187.3

A History of Performance and Reliability

For nearly 60 years, our Thermo Scientific Sorvall centrifuges have stood for outstanding performance and reliability in the lab. That tradition continues today. From basic benchtop instruments to advanced floor models, we take pride in manufacturing centrifuges that deliver

reliable operation and consistent results year after year.

Worldwide Service and Support

We are committed to keeping your lab equipment working at peak performance levels. Our goal is to help you lower ownership costs, manage labs more

effectively, and increase productivity.

Contact your local account representative to learn more about our service offerings, including service agreements, preventive maintenance, on-site field repair, depot repair, compliance services and educational services.

©2007 Thermo Fisher Scientific Inc. All rights reserved. Sorvall, AUTO-LOCK and Nalgene are registered trademarks of Thermo Fisher Scientific Inc. and its subsidiaries. FIBERLite is a registered trademark of PiraMoon Technologies Inc. Falcon is a trademark of BD Biosciences. Vacutainer, Hemogard and Microtainer are trademarks or registered trademarks of BD. Specifications, terms and pricing are subject to change. Not all products are available in all countries. Please consult your local sales representative for details.



For customer service, call 1-800-766-7000.
To fax an order, use 1-800-926-1166.
To order online: www.fishersci.com

BN1008071

BRO-SPSST1FS-1007

Thermo
SCIENTIFIC